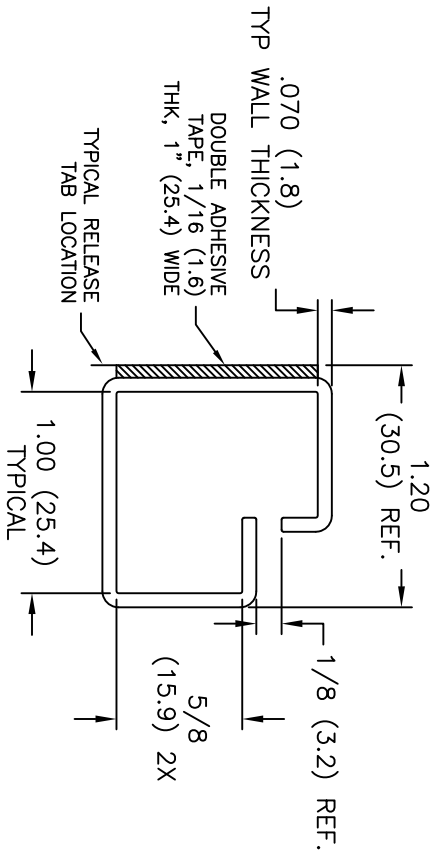
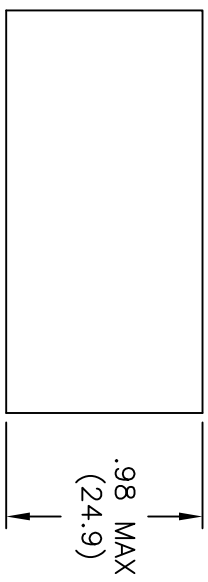
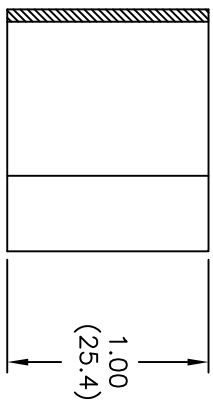
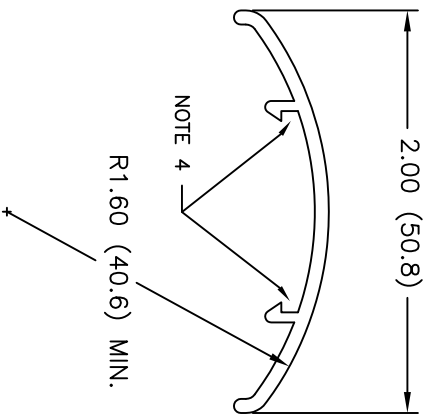


TYPICAL ASSEMBLY



OFCC-16-A-RT



OFCG-16

- NOTES:
1. MATERIAL: RIGID PVC (RMS-04).
  2. COLOR: BLACK.
  3. TAPE: ACRYLIC ADHESIVE TAPE (RMS-15)
  4. OFCG TO SNAP FIT OVER OFCC AS SHOWN IN TYPICAL ASSEMBLY

E	SEE CO 200745 FOR CHANGES	SK 01.06.12
D	SEE CO 200390 FOR CHANGES	SK 07.21.09
C	SEE ECN #1342 FOR CHANGES	SK 06.26.07
B	SEE ECN #1044	SK 08.25.05
A	CHANGED FILE NO.	SM 10.30.02
REV	DESCRIPTION	ENGR DATE

TITLE: OPTICAL FIBER COLLING CLIP		DWG IN (IN/MM)		FINAL	PRINT TYPE
TOLERANCES UNLESS NOTED	FILE # OFCC-OFCG	DWN: R.S.	APP:		
.XX=±.020	MAT'L: SEE NOTES	DI: 06-22-95	DI:	PART #	SEE DWG
.XXX=±.015	RE: RICHCO, INC.	RICHCO INC.			
FRAO=±1/32		Po Box 804238, CHICAGO, 60680			
ANG=±1°		(773) 539-4060			CA