

4

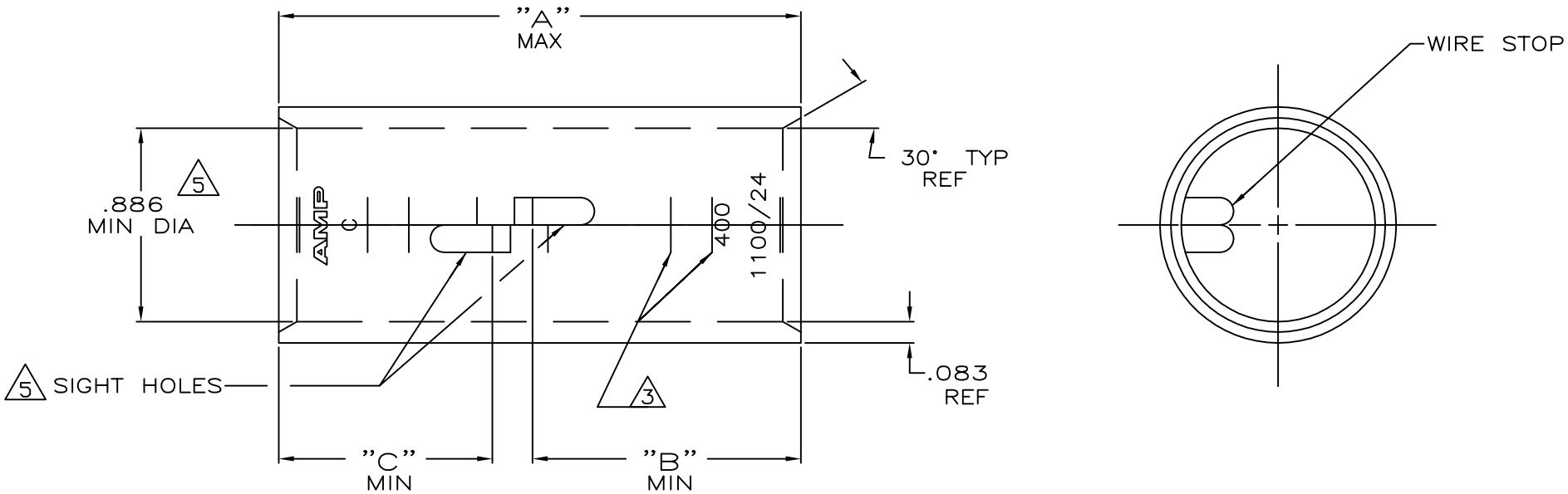
3

2

1

THIS DRAWING IS UNPUBLISHED. RELEASED FOR PUBLICATION
 © COPYRIGHT - By - ALL RIGHTS RESERVED.

LOC	DIST	REVISIONS					
G	86	P	LTR	DESCRIPTION	DATE	DWN	APVD
		U		ECR-13-000998	11FEB2013	PK	HS



- ① TIN PL .000150 MIN THK PER ASTM B-545
- ② PART NO: 324465; .180 LB.
PART NO: 1-324465-0; .180 LB.
PART NO: 2-324465-5; .200 LB.

- ③ CRIMP LOCATION MARKS ON PART NO. 2-324465-5 ONLY.
- ④ CLEANED, UNPLATED
- ⑤ .045 MAX BURR ALLOWED INSIDE THE WIRE BARREL ID IN AREA OF SIGHT HOLE.

.97	1.22	2.45	④ ⑤	375-450	COPPER	2-324465-5
.97	.97	2.20	④	MCM	ASTM-B-75	1-324465-0
			④		ANNEALED	324465
"C"	"B"	"A"	FINISH	WIRE RANGE	MATERIAL	PART No

THIS DRAWING IS A CONTROLLED DOCUMENT.

DWN	DK SCHRUM	4/24/89
CHK	MS FEHER	4/24/89
APVD	WJ VOCKROTH	11/8/89
PRODUCT SPEC	-	
APPLICATION SPEC	-	
WEIGHT	②	-

TE Connectivity

SPLICE, BUTT, AMPPOWER
WIRE SIZE:400 MCM

SIZE	CAGE CODE	DRAWING NO	RESTRICTED TO
A3	00779	C=324465	-

CUSTOMER DRAWING SCALE 2:1 SHEET 1 OF 1 REV U