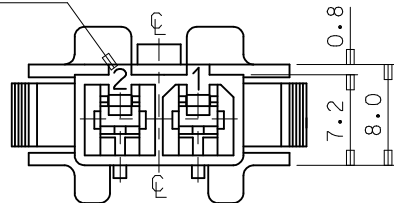
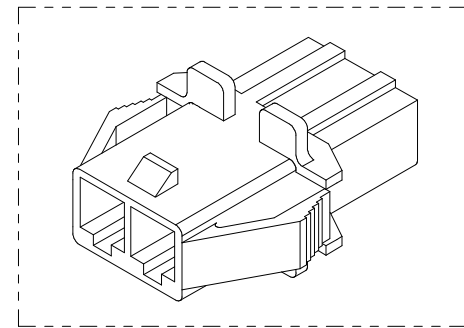
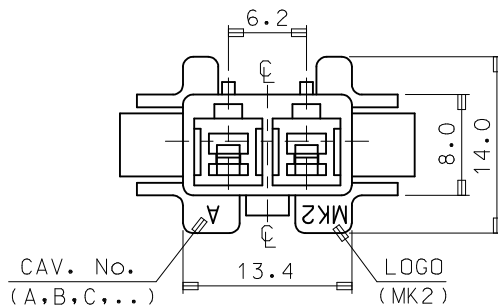


CIRCUIT No.

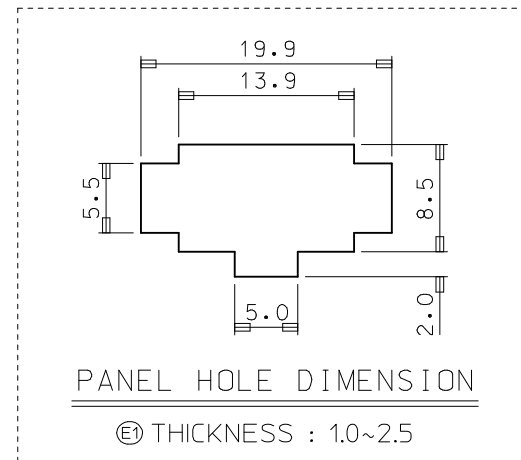
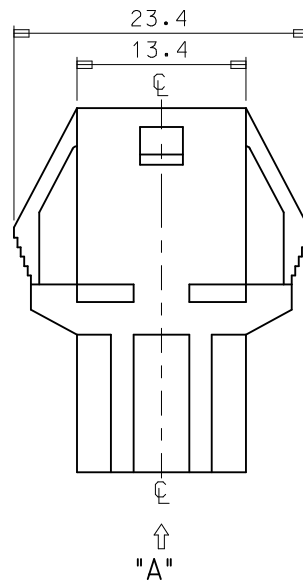
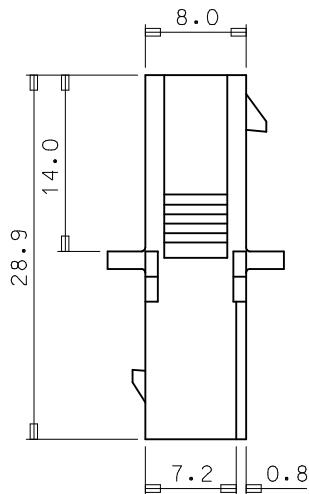


VIEW "A"



NOTES

1. MATERIAL & COLOR : SEE TABLE
2. MATING HOUSING : 35151-021*
3. APPLICABLE TERMINAL : 35745-0*10
- ④ 4. APPLICABLE TPA : 35150-029*



| NO | PRODUCT | | MATERIAL | |
|----|------------|-------------|----------|---------------------|
| | PART NO | MATERIAL NO | COLOR | DESCRIPTION |
| 1 | 35150-0210 | 351500210 | NATURAL | PBT (UL94V-0) |
| 2 | 35150-0212 | 351500212 | RED | |
| 3 | 35150-0214 | 351500214 | BLUE | |
| 4 | 35150-0219 | 351500219 | NATURAL | PC/PET (UL94V-0) |
| 5 | 35150-2219 | 351502219 | RED | |
| 6 | 35150-3219 | 351503219 | YELLOW | |
| 7 | 35150-4219 | 351504219 | BLUE | |

| | | | | | | | | | | |
|--|-------------------------------|---------------------------------------|-------------|---|------------|---------------------|---------------------------------------|------------------------|--|--|
| REVISED EC NO: KOR2014-0009 DRWN: JSSHIN 2013/07/19 CHKD: SHCHU 2013/07/19 APPR: YSKIMO2 2013/09/03 D1 | QUALITY SYMBOLS ▽=0 ◻=0 | GENERAL TOLERANCES (UNLESS SPECIFIED) | | DIMENSION STYLE MM ONLY | | SCALE 2/1 | DESIGN UNITS METRIC | THIRD ANGLE PROJECTION | | |
| | | | | mm | INCH | DRAWN BY | DATE | TITLE | | |
| | | 4 PLACES | ± --- | ± --- | JS.KANG | 1992/09/14 | 6.2 PITCH W/W CONN MALE HSG-2P(W/EAR) | | | |
| | | 3 PLACES | ± --- | ± --- | CHECKED BY | DATE | | | | |
| 2 PLACES | ± --- | ± --- | BK.CHOI | 1992/09/14 | | | | | | |
| 1 PLACE | ± 0.2 | ± --- | APPROVED BY | DATE | | | | | | |
| | | ANGULAR ± 1 ° | | CW.LEE | 1992/09/14 | | | | | |
| DRAFT WHERE APPLICABLE MUST REMAIN WITHIN DIMENSIONS | | SEE TABLE | | MATERIAL NO. | | DOCUMENT NO. | | SHEET NO. | | |
| | | SIZE A3 | | THIS DRAWING CONTAINS INFORMATION THAT IS PROPRIETARY TO MOLEX INCORPORATED AND SHOULD NOT BE USED WITHOUT WRITTEN PERMISSION | | | | | | |