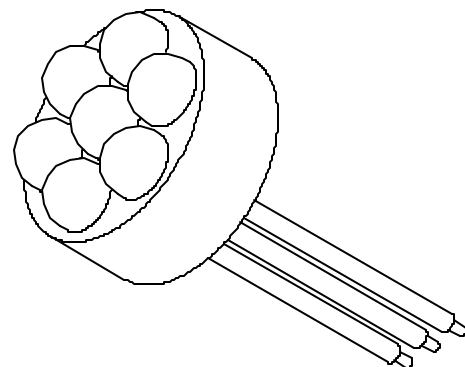
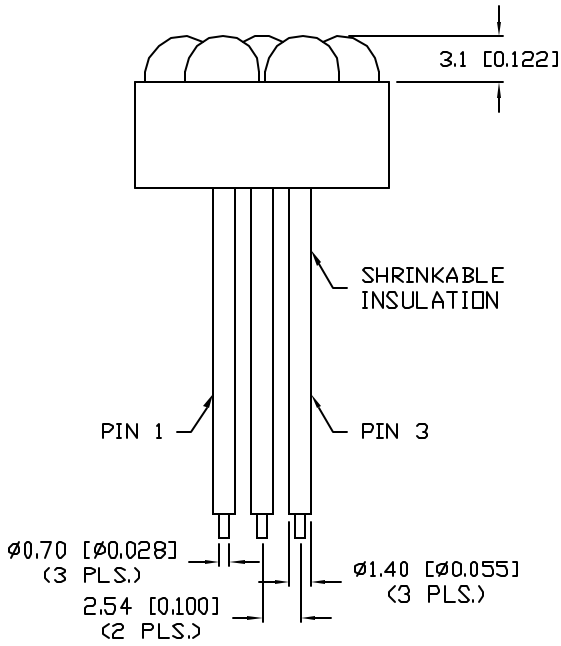
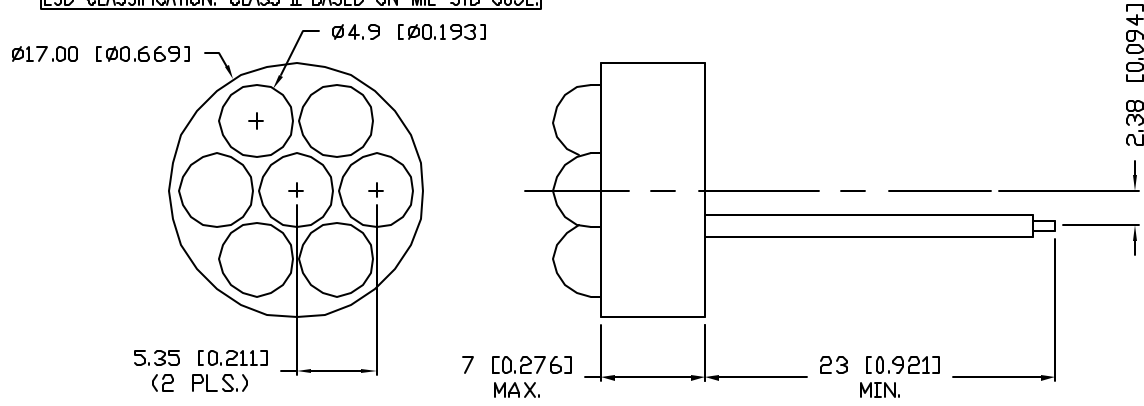


# UNCONTROLLED DOCUMENT

CAUTION: STATIC SENSITIVE DEVICE  
 FOLLOW PROPER E.S.D. HANDLING PROCEDURES  
 WHEN WORKING WITH THIS PART.  
 ESD CLASSIFICATION: CLASS II BASED ON MIL-STD 883E.

PART NUMBER  
**SSP-LXC0672UP7A**  
 REV.



ELECTRO-OPTICAL CHARACTERISTICS  $T_A=25^{\circ}\text{C}$   $I_f=20/40\text{mA}$

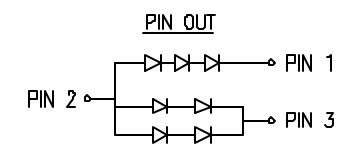
| PARAMETER          | MIN              | TYP      | MAX  | UNITS          | TEST COND               |
|--------------------|------------------|----------|------|----------------|-------------------------|
| PEAK WAVELENGTH    |                  | 525      |      | nm             |                         |
| FORWARD VOLTAGE**  |                  | 10.5/7.0 | 12/8 | V <sub>f</sub> |                         |
| REVERSE VOLTAGE    | 5.0              |          |      | V <sub>r</sub> | I <sub>r</sub> =100μA   |
| AXIAL INTENSITY *  |                  | 5000     |      | mcd            | I <sub>f</sub> =20/40mA |
| VIEWING ANGLE      |                  | 30       |      | 2x theta       |                         |
| EMITTED COLOR:     | ULTRA PURE GREEN |          |      |                |                         |
| EPOXY LENS FINISH: | WATER CLEAR      |          |      |                |                         |

\* INTENSITY PER DIE.  
 \*\*VOLTAGE FOR PIN 1/PIN 3

LIMITS OF SAFE OPERATION AT 25°C PER DIE

| PARAMETER                | MAX        | UNITS      |
|--------------------------|------------|------------|
| PEAK FORWARD CURRENT*    | 100        | mA         |
| STEADY CURRENT           | 30         | mA         |
| POWER DISSIPATION        | 98         | mW         |
| DERATE FROM 25°C         | -1.0       | mW/°C      |
| OPERATING, STORAGE TEMP. | -30 TO +70 | °C         |
| SOLDERING TEMP.          | +260       | °C         |
| 2.0mm FROM BODY          |            | 3 SEC. MAX |

\*  $t < 10\mu\text{s}$

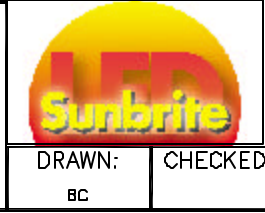


# UNCONTROLLED DOCUMENT

\*UNLESS OTHERWISE SPECIFIED TOLERANCES PER DECIMAL PRECISION ARE: X=±1 (±0.038), XX=±0.5 (±0.020), XXX=±0.25 (±0.010), XXXX=±0.127 (±0.005). LEAD SIZE=±0.05 (±0.002), LEAD LENGTH=±0.75 (±0.030). MIN=+DECIMAL PRECISION MAX=-DECIMAL PRECISION

REV. PART NUMBER  
**SSP-LXC0672UP7A**  
 0.67" CIRCULAR, 7 LED CLUSTER,  
 525nm InGaN/SiC GREEN LEDS, WATER CLEAR LENS.

**CONFIDENTIAL INFORMATION**  
 THE INFORMATION CONTAINED IN THIS DOCUMENT IS THE PROPERTY OF SUNBRITE LEDS. EXCEPT AS SPECIFICALLY AUTHORIZED IN WRITING BY SUNBRITE LEDS, THE HOLDER OF THIS DOCUMENT SHALL KEEP ALL INFORMATION CONTAINED HEREIN CONFIDENTIAL AND SHALL PROTECT SAME IN WHOLE OR IN PART FROM DISCLOSURE AND DISSEMINATION TO ALL THIRD PARTIES.  
**RELIABILITY NOTE**  
 OUR MANY YEARS OF EXPERIENCE DATA ACCUMULATION INDICATE THAT SOLDER HEAT IS A MAJOR CAUSE OF EARLY AND FUTURE FAILURE. PLEASE PAY ATTENTION TO YOUR SOLDERING PROCESS.



286 E. HELEN ROAD  
 PALATINE, IL 60067-6976  
 PHONE: +1.847.359.2790  
 FAX: +1.847.359.2867  
 WEB: www.sunbriteleds.com  
 DRAWN: BC CHECKED: APPROVED: DATE: 1.14.00  
 PAGE: 1 OF 1