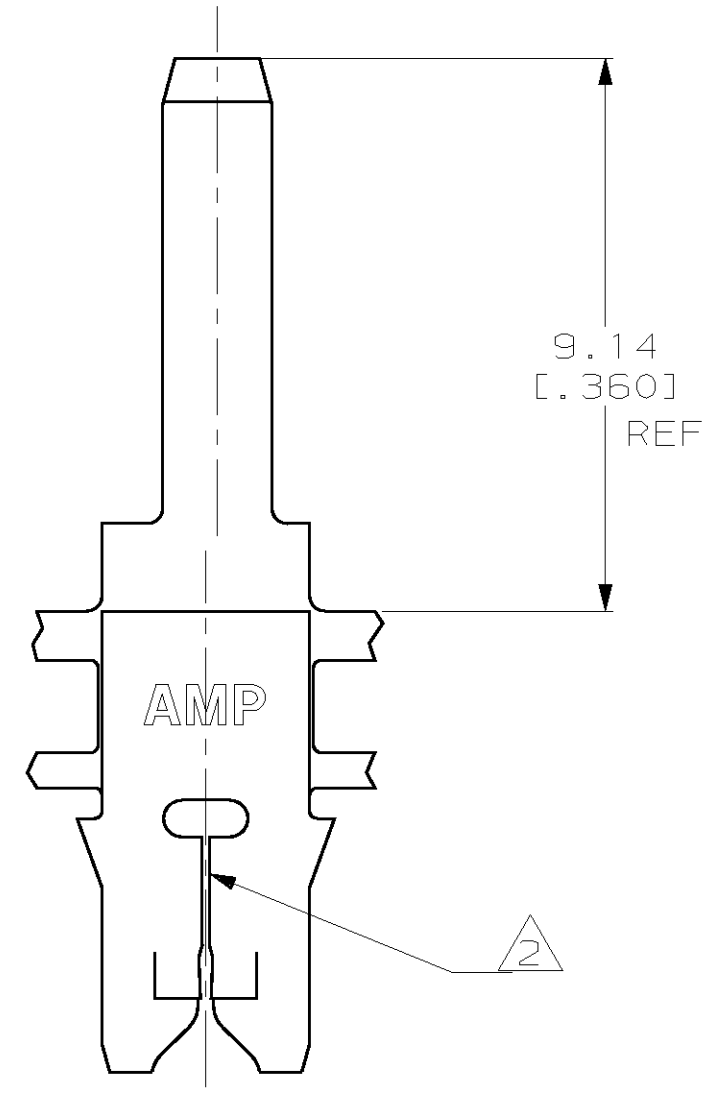
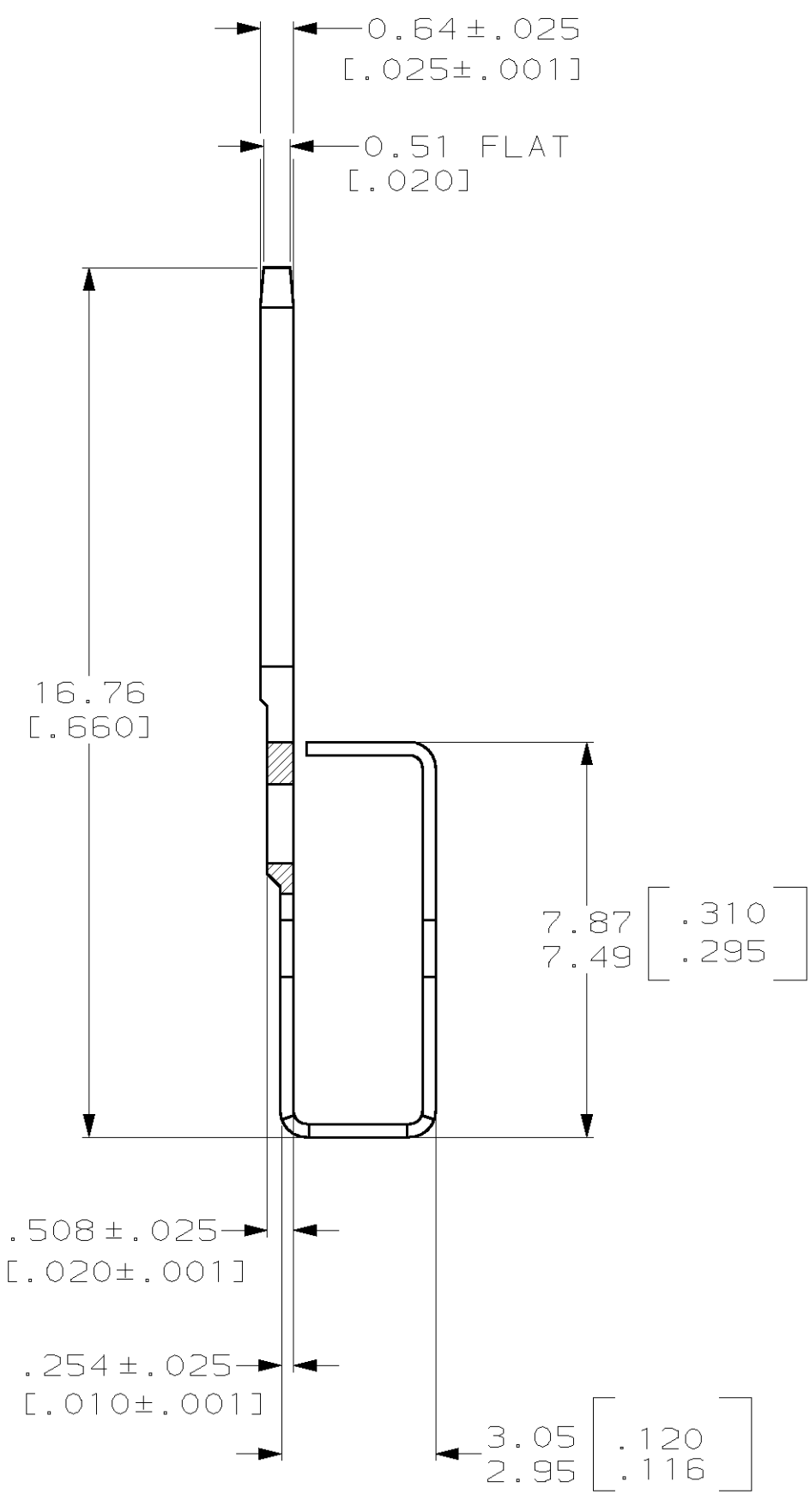
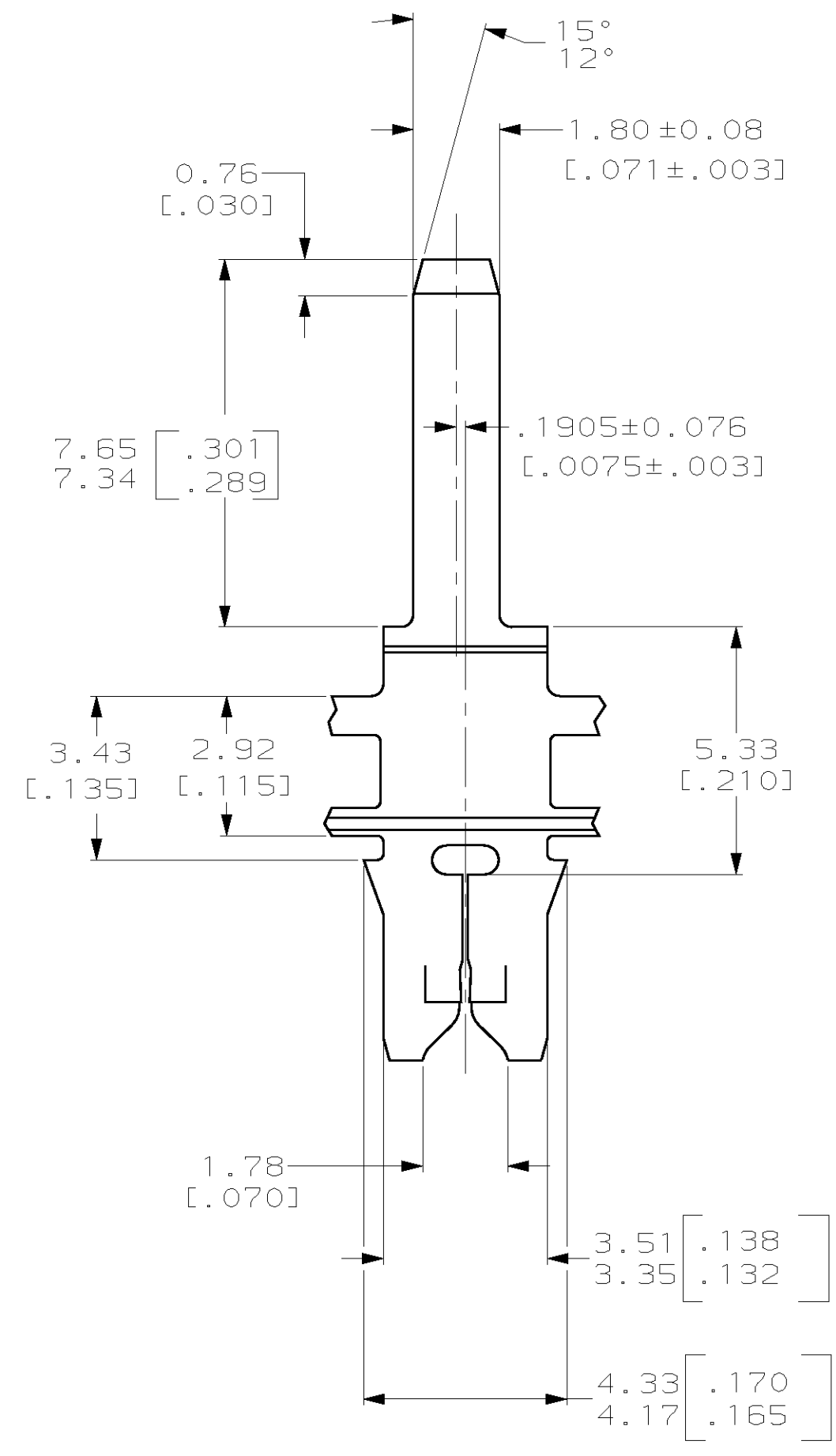


THIS DRAWING IS UNPUBLISHED. RELEASED FOR PUBLICATION
 (C) COPYRIGHT 19 BY AMP INCORPORATED. ALL RIGHTS RESERVED.

LOC	DIST	REVISIONS			
P	LTR	DESCRIPTION	DATE	DWN	APVD
AF	50	B	ADDED -2 PER 063A-0559-01	220CT01	MF KR



- 1 CONTINUOUS STRIP ON REELS WITH TERMINALS LOCATED ON 5.59±0.08 [.220±.003] CENTERS
- 2 SLOT TERMINATES EITHER A SINGLE OR DOUBLE MAGNET WIRE OF THE SAME TYPE AND SIZE, COPPER RANGE: 0.18-0.23mm [#33-#31]
- 3 SPECIAL PACKAGE MARKINGS- GREEN COLOR CODE TAG NEXT TO REEL TAG
- 4 PRELIMINARY - NOT FOR PRODUCTION.



REVERSE	3	63910-2	4
STANDARD	3	63910-1	
REELING		PART NUMBER	

THIS DRAWING IS A CONTROLLED DOCUMENT.		DWN R.GRZYBOWSKI 8MAY96	AMP Incorporated Harrisburg, PA 17105-3608	
DIMENSIONS: mm		CHK M.S.FEHER 8MAY96	NAME TAB, 1.80 [.071], MAG-MATE™ RIGHT HAND	
TOLERANCES UNLESS OTHERWISE SPECIFIED:		APVD N.E.NEFF 8MAY96	PRODUCT SPEC 108-2012	
0 PLC ±-		APPLICATION SPEC 114-2046	SIZE A2	CAGE CODE 00779
1 PLC ±-		WEIGHT -	DRAWING NO C-63910	
2 PLC ±0.13(.005)		CUSTOMER DRAWING	SCALE 8:1	SHEET 1 OF 1
3 PLC ±-				REV B
4 PLC ±-				
ANGLES ±-				
MATERIAL 4M PRE-MILLED BRASS	FINISH 0.002032(.000080) MIN TIN PER MIL-T-10727			