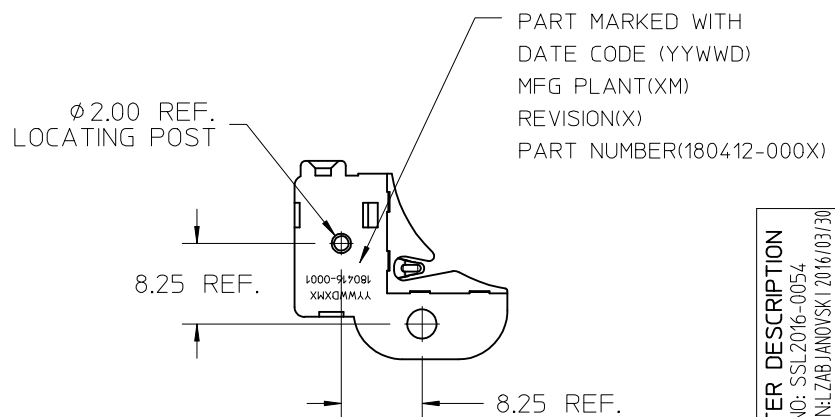
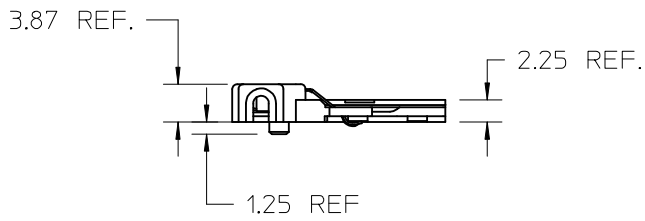
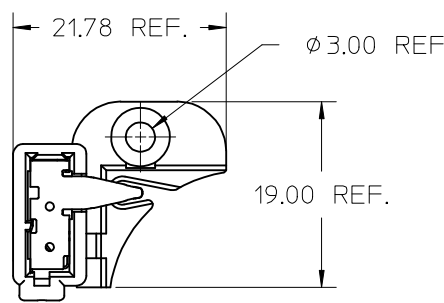


10	9	8	7	6	5	4	3	2	1
PART NUMBER	DESCRIPTION								
180416-0001	CLL040-CLL050 HOLDER ASSEMBLY - NO CAP								
180416-0002	CLL040-CLL050 HOLDER ASSEMBLY - CAP WITH TAB								
180416-0003	CLL040-CLL050 HOLDER ASSEMBLY - CAP WITHOUT TAB								

HOLDER ASSEMBLY - NO CAP



NOTES:

1. MATERIALS: HOUSING: POLYAMIDE (PA66), GLASS FILLED, UL94V-0, 5VA (89992-0289); CAP: POLYAMIDE (PA66) UNFILLED, UL94V-0 (89992-0922); TERMINAL: COPPER ALLOY
2. FINISHES: TERMINAL: NICKEL (Ni) UNDERPLATE 1.27 μ m, SELECT TIN (Sn) 2.54 μ m, SELECT GOLD (Au) 0.76 μ m
3. PRODUCT SPECIFICATION: PS-180412-001
4. PACKAGING SPECIFICATION: PK-180416-001
5. APPLICATION SPECIFICATION: AS-180412-001
6. FOR USE WITH: CITIZEN COB SERIES CLL040 OR CLL050 LEDS
7. HOLDER ASSEMBLY AVAILABLE WITH OPTIONAL CAP SEE CHART FOR PART NUMBERS
8. TWO HOLDER ASSEMBLIES ARE REQUIRED FOR EACH LED.
9. WIRE GAUGE: 18 OR 20 AWG, SOLID OR STRANDED WITH TIN OVERCOAT. STRIP LENGTH 1CM.
10. UL:OLFB2 UL496 FILE: E345583.

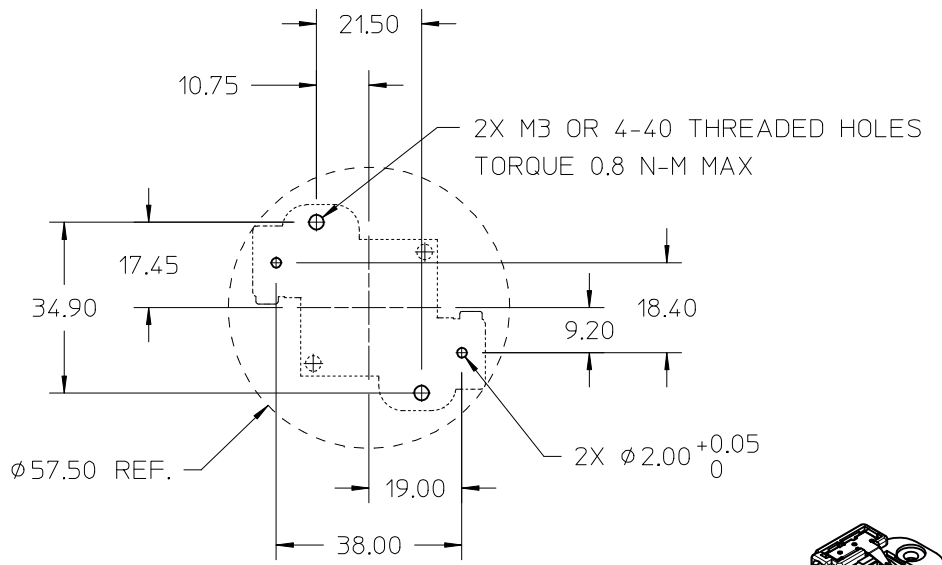
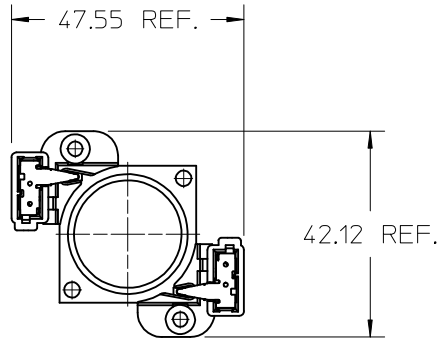


ISOMETRIC VIEW
Scale 1:1

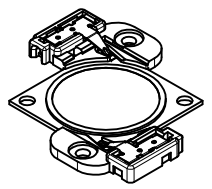
SHEET 1 SCALE 2:1

ENTER DESCRIPTION EC NO: SSL2016-0054 DR:MIŁAZAB, JANOVSKI 2016/03/30 CHKD: APPR: GMEYER 2016/04/11 REV	QUALITY SYMBOLS $\nabla/0$ $\nabla/0$ $\nabla/0$	GENERAL TOLERANCES (UNLESS SPECIFIED) <table border="1"> <tr> <th></th> <th>mm</th> <th>INCH</th> </tr> <tr> <td>4 PLACES</td> <td>\pm---</td> <td>\pm---</td> </tr> <tr> <td>3 PLACES</td> <td>\pm---</td> <td>\pm---</td> </tr> <tr> <td>2 PLACES</td> <td>\pm0.13</td> <td>\pm---</td> </tr> <tr> <td>1 PLACE</td> <td>\pm0.25</td> <td>\pm---</td> </tr> </table>		mm	INCH	4 PLACES	\pm ---	\pm ---	3 PLACES	\pm ---	\pm ---	2 PLACES	\pm 0.13	\pm ---	1 PLACE	\pm 0.25	\pm ---	DIMENSION STYLE MM ONLY DRAWN BY DATE MCOLE 2012/01/30 CHECKED BY DATE MCOLE 2012/05/15 APPROVED BY DATE	SCALE 2:1 DESIGN UNITS METRIC THIRD ANGLE PROJECTION	TITLE CITIZEN COB SERIES CLL040-CLL050 HOLDER ASSEMBLY
		mm	INCH																	
	4 PLACES	\pm ---	\pm ---																	
	3 PLACES	\pm ---	\pm ---																	
2 PLACES	\pm 0.13	\pm ---																		
1 PLACE	\pm 0.25	\pm ---																		
DRAFT WHERE APPLICABLE MUST REMAIN WITHIN DIMENSIONS		MATERIAL NO. SEE CHART	DOCUMENT NO. SD-180416-001	SHEET NO. 1 OF 4																
THIS DRAWING CONTAINS INFORMATION THAT IS PROPRIETARY TO MOLEX INCORPORATED AND SHOULD NOT BE USED WITHOUT WRITTEN PERMISSION																				
MOLEX INCORPORATED																				

ILLUSTRATION OF CLL040 LED WITH TWO HOLDER ASSEMBLIES - NO CAP



RECOMMENDED MOUNTING DIMENSIONS

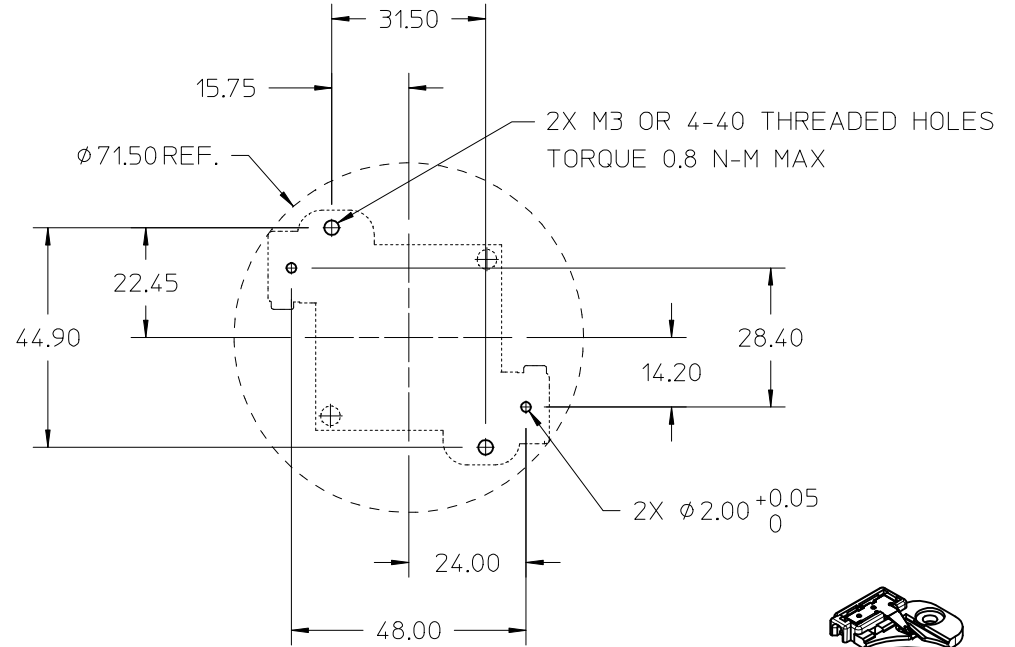
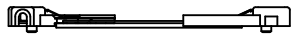
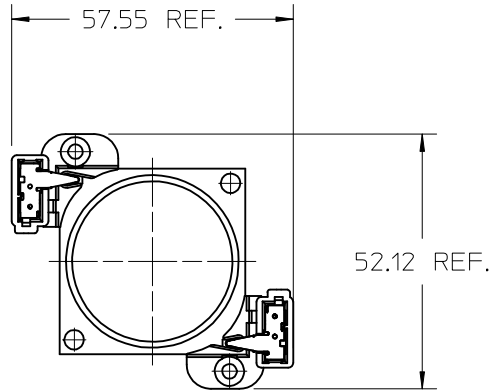


ISOMETRIC VIEW
Scale 1:1

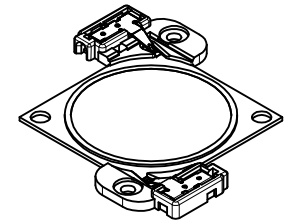
SHEET 2 SCALE 1:1

ENTER DESCRIPTION EC NO: SSL2016-0054 DRWN: LZABJANOVSKI 2016/03/30 CHKD: APPR: GMEYER 2016/04/11 REV	QUALITY SYMBOLS	GENERAL TOLERANCES (UNLESS SPECIFIED)		DIMENSION STYLE MM ONLY		SCALE 1:1	DESIGN UNITS METRIC	THIRD ANGLE PROJECTION
	▽=0	mm	INCH	DRAWN BY	DATE	TITLE		
	▽=0	4 PLACES ± ---	± ---	MCOLE	2012/01/30	CITIZEN COB SERIES CLL040-CLL050 HOLDER ASSEMBLY		
	▽=0	3 PLACES ± ---	± ---	CHECKED BY	DATE	MATERIAL NO.		
	2 PLACES ± 0.13	± ---	MCOLE	2012/05/15	SEE CHART			
	1 PLACE ± 0.25	± ---	APPROVED BY	DATE	DOCUMENT NO.			
	ANGULAR ± 1/2°		DRAFT WHERE APPLICABLE MUST REMAIN WITHIN DIMENSIONS			SD-180416-001		
B1				SIZE B			SHEET NO. 2 OF 4	
THIS DRAWING CONTAINS INFORMATION THAT IS PROPRIETARY TO MOLEX INCORPORATED AND SHOULD NOT BE USED WITHOUT WRITTEN PERMISSION								

ILLUSTRATION OF CLL050 LED WITH TWO ASSEMBLIES - NO CAP



RECOMMENDED MOUNTING DIMENSIONS

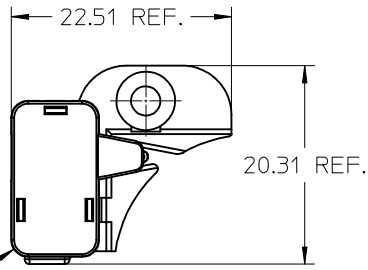


ISOMETRIC VIEW
Scale 1:1

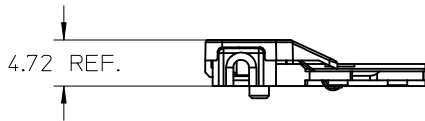
SHEET 3 SCALE 1:1

ENTER DESCRIPTION EC NO: SSL2016-0054 DRWNL:ZAB.JANOVSKI 2016/03/30 CHKD: APPR:GMEYER 2016/04/11 REV	QUALITY SYMBOLS	GENERAL TOLERANCES (UNLESS SPECIFIED)	DIMENSION STYLE	SCALE	DESIGN UNITS	THIRD ANGLE PROJECTION
	▽/0	mm INCH	MM ONLY	1:1	METRIC	
	▽/0	4 PLACES ± --- ± ---	DRAWN BY DATE	TITLE		
	▽/0	3 PLACES ± --- ± ---	MCOLE 2012/01/30	CITIZEN COB SERIES		
	2 PLACES ± 0.13 ± ---	CHECKED BY DATE	CLL040-CLL050 HOLDER			
	1 PLACE ± 0.25 ± ---	MCOLE 2012/05/15	ASSEMBLY			
	ANGULAR ± 1/2°	APPROVED BY DATE	MOLEX INCORPORATED			
	DRAFT WHERE APPLICABLE MUST REMAIN WITHIN DIMENSIONS	MATERIAL NO.	SEE CHART	DOCUMENT NO.	SD-180416-001	SHEET NO. 3 OF 4
B1		SIZE B	THIS DRAWING CONTAINS INFORMATION THAT IS PROPRIETARY TO MOLEX INCORPORATED AND SHOULD NOT BE USED WITHOUT WRITTEN PERMISSION			

HOLDER ASSEMBLY - CAP WITH TAB

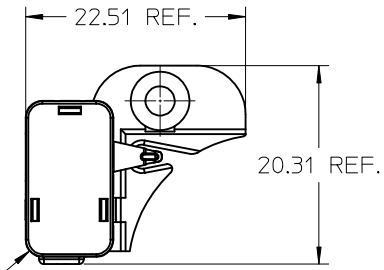


CAP WITH TAB
P/N 180417-0001
(SEE NOTE 7)

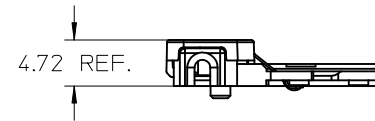


ISOMETRIC VIEW
Scale 1:1

HOLDER ASSEMBLY - CAP WITHOUT TAB



CAP WITHOUT TAB
P/N 180417-0002
(SEE NOTE 7)



ISOMETRIC VIEW
Scale 1:1

ENTER DESCRIPTION EC NO: SSL2016-0054 DRAWN: ZAB, JANOVSKI 2016/03/30 CHKD: APPR: GMEYER 2016/04/11 REV: B1	QUALITY SYMBOLS $\nabla = 0$ $\nabla = 0$ $\nabla = 0$	GENERAL TOLERANCES (UNLESS SPECIFIED) <table border="1"> <thead> <tr> <th></th> <th>mm</th> <th>INCH</th> </tr> </thead> <tbody> <tr> <td>4 PLACES</td> <td>\pm ---</td> <td>\pm ---</td> </tr> <tr> <td>3 PLACES</td> <td>\pm ---</td> <td>\pm ---</td> </tr> <tr> <td>2 PLACES</td> <td>\pm 0.13</td> <td>\pm ---</td> </tr> <tr> <td>1 PLACE</td> <td>\pm 0.25</td> <td>\pm ---</td> </tr> <tr> <td>0 PLACE</td> <td>\pm ---</td> <td>\pm ---</td> </tr> </tbody> </table>		mm	INCH	4 PLACES	\pm ---	\pm ---	3 PLACES	\pm ---	\pm ---	2 PLACES	\pm 0.13	\pm ---	1 PLACE	\pm 0.25	\pm ---	0 PLACE	\pm ---	\pm ---	DIMENSION STYLE MM ONLY	SCALE 2:1	DESIGN UNITS METRIC	THIRD ANGLE PROJECTION
		mm	INCH																					
	4 PLACES	\pm ---	\pm ---																					
	3 PLACES	\pm ---	\pm ---																					
2 PLACES	\pm 0.13	\pm ---																						
1 PLACE	\pm 0.25	\pm ---																						
0 PLACE	\pm ---	\pm ---																						
DRAFT WHERE APPLICABLE MUST REMAIN WITHIN DIMENSIONS	ANGULAR $\pm 1/2^\circ$	DRAWN BY: MCOLE DATE: 2012/01/30	CHECKED BY: MCOLE DATE: 2012/05/15	TITLE CITIZEN COB SERIES CLL040-CLL050 HOLDER ASSEMBLY																				
		MATERIAL NO.	SEE CHART	DOCUMENT NO. SD-180416-001	SHEET NO. 4 OF 4																			
		THIS DRAWING CONTAINS INFORMATION THAT IS PROPRIETARY TO MOLEX INCORPORATED AND SHOULD NOT BE USED WITHOUT WRITTEN PERMISSION																						