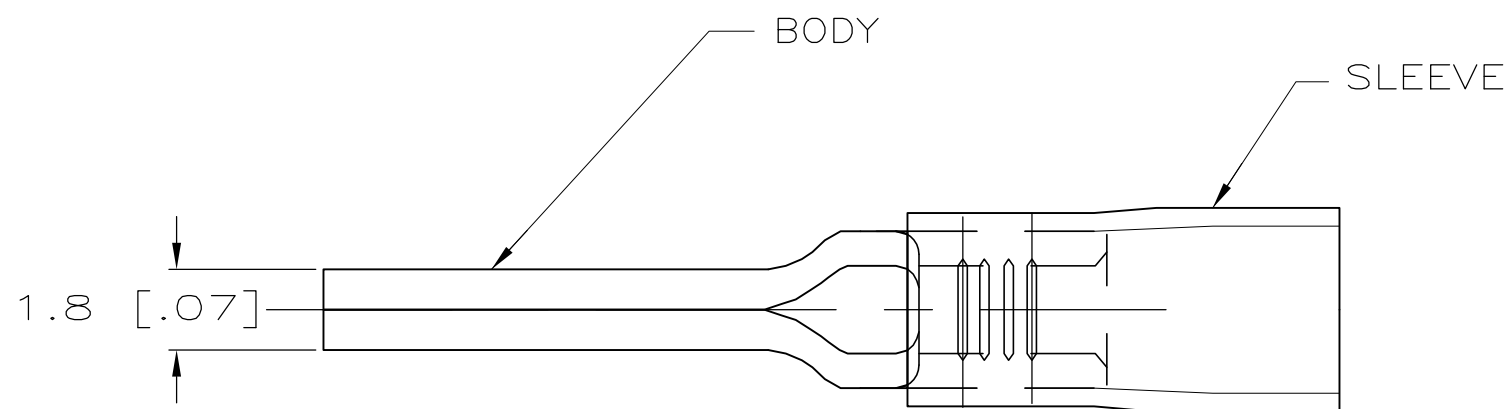


THIS DRAWING IS UNPUBLISHED. RELEASED FOR PUBLICATION
 © COPYRIGHT BY TYCO ELECTRONICS CORPORATION. ALL RIGHTS RESERVED.

LOC	DIST	REVISIONS					
G	14	P	LTR	DESCRIPTION	DATE	DWN	APVD
			B1	REV PER ECR 07-012476	30MAY07	JR	TM

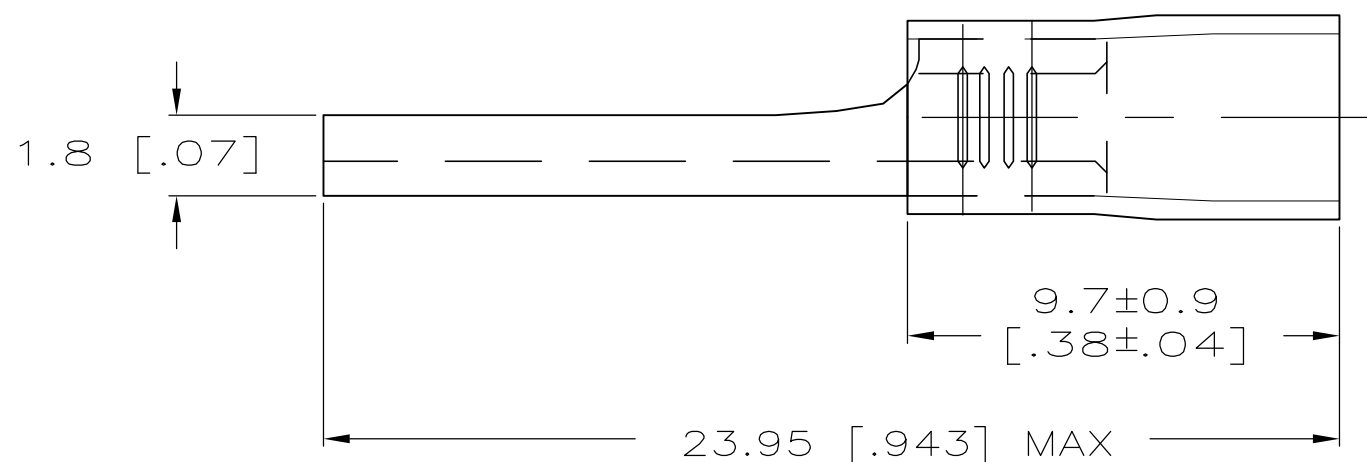


AMP WIRE RANGE	RU FILE E13288
22-18 AWG STRANDED	22-18 AWG STRANDED

1 WIRE INSULATION DIA.
2.67-3.56 [.105-.140] DIA.

2 MATERIAL: BODY - CU PER ASTM B152
SLEEVE - PVC

3 FINISH: BODY - TIN PL ASTM B545
SLEEVE - COLOR - RED



-	-	-
1000	ON TAPE	696116-1
QTY	PACKAGE TYPE	PART NO

AMP INCORPORATED CUSTOMER SERVICE SYSTEMS		MAX RECOMMENDED OPERATING TEMPERATURE: 90°C [194°F]	THIS DRAWING IS A CONTROLLED DOCUMENT.		DWN JR RUTH 04AUG99	Tyco Electronics Corporation Harrisburg, PA 17105-3608	
FOR ADDITIONAL PRODUCT INFORMATION OR COPIES OF DRAWINGS AND TECHNICAL DOCUMENTS	PRODUCT INFORMATION CENTER 1-800-522-6752	VOLTAGE RATING: -	DIMENSIONS: mm [INCHES]	TOLERANCES UNLESS OTHERWISE SPECIFIED:	CHK T MICHELUTTI 04AUG99	NAME TERMINAL, WIRE PIN, PLASTI-GRIP, 22-18	
FOR APPLICATION TOOLING INFORMATION	TOOLING ASSISTANCE CENTER 1-800-722-1111	CIRCULAR MIL AREA: 0.25-1.6mm ² [493-3158] STRANDED		0 PLC ± - 1 PLC ± 0.38 [.015] 2 PLC ± 0.20 [.008] 3 PLC ± - 4 PLC ± - ANGLES ± -	APVD T MICHELUTTI 04AUG99	PRODUCT SPEC	SIZE A3
FOR ORDER ENTRY	1-800-526-5142	THIS DRAWING IS A CONTROLLED DOCUMENT FOR AMP INCORPORATED. IT IS SUBJECT TO CHANGE AND THE CONTROLLING ENGINEERING ORGANIZATION SHOULD BE CONTACTED FOR THE LATEST REVISION.	MATERIAL	FINISH	APPLICATION SPEC	WEIGHT	CAGE CODE 00779
			2	3	RESTRICTED TO	DRAWING NO G-696116	SCALE 6:1
			CUSTOMER DRAWING		SHEET 1 OF 1	REV B1	